

2023-2024

ANNUAL REPORT SEASON 78



The
Michigan
Philharmonic



MICHIGAN PHILHARMONIC

The Michigan Philharmonic “Orchestrating the Extraordinary”

The Michigan Philharmonic is one of the most innovative and dynamic professional symphony orchestras in Southeast Michigan; reaching out to a broad and diverse array of audiences, and providing an enjoyable cultural and social experience.

Our Music Director & Conductor Nan Washburn, who has been leading us for 23 seasons, has won 19 ASCAP Awards for Adventuresome Programming. We bring our events into an ever-expanding roster of Michigan communities, including Plymouth, Canton, and Northville, Livonia, Brighton, the Downriver communities and the city of Detroit.

We invite anyone who loves live music events to ‘Spend the night with Michigan Phil!

Mission Statement

The mission of the Michigan Philharmonic is to enrich the communities of Southeastern Michigan by fostering excellence and innovation in the performance of orchestral music, to educate current and future audiences, and to bring distinction to our community through the regional presence and standing of our professional performing ensembles.

Vision Statement

Through innovative programming, orchestral excellence and regional outreach initiatives, within five years the Michigan Philharmonic will be one of the top five financially sustainable Michigan orchestras.

Michigan Philharmonic –2023-2024 Board of Directors—Executive Committee

Chris Belcher - President

Chris has over 28 years of experience as a Wealth Manager and Trust officer, helping high net worth individuals and their families grow their wealth, protect and preserve that wealth and plan for the transfer of that wealth in the most tax efficient manner. Chris is an active member of the Michigan Planned Giving Roundtable and chairs the Planned Giving committee of the MI PHIL.

Narendra Sheth – Vice President

Narendra Sheth, now retired, was a Chief Statistician for Ford Motor Co. He hosts the Indian Radio Show on WPON Detroit every Saturday morning for the past 43 years. Narendra is the President and Founder of Geetmala Foundation of Michigan supporting humanitarian and arts and cultural efforts for the Detroit Metro Indian Community.

Susan Hoy, Amerisure, Treasurer

Sue was born and raised in Plymouth and currently resides Canton. Her family is 6th generation in the Plymouth-Canton area. She received an Associate Degree in Accounting from Oakland Community College and her BS degree in Finance from Lawrence Technological University. She has worked in the IT field in the Insurance industry for the past 38 years fulfilling roles in Product Development, as a Business Analyst, and Project Manager. Currently she is a Senior Quality Assurance Analyst at Amerisure Insurance Company. Sue is very involved in her church where she has served on many committees over the years to include Finance, Trustees and Worship committees and rings in the handbell choir. She is a member of P.E.O. (a philanthropic organization for women's education) She has been married to Rich (electrical engineer (GMI; MBA UM-AA) at Graybar Electric Company) for 29 years and they have two daughters. She enjoys golf, any form of exercise, working in her yard, snowmobiling, and spending time at her family's cottage in the U.P.

Steve Chrypinski, Secretary

Steve recently retired as the Director of Marketing for Michigan Radio, the state's leading NPR news source. In that role, he oversaw the station's communications and marketing efforts, outreach activities, community partnerships and non-traditional revenue ventures. Steve has over thirty years of experience in the broadcasting field, in both sales and marketing positions. He lives in Plymouth with his wife Molly, and they have two young adult children who also live in the area. He is a graduate of the University of Michigan and enjoys playing tenor saxophone in the UM Alumni Concert Band.

Board of Directors—Members At-Large

Dr. Sam Barresi, Retired

Sam holds a Doctorate in Educational Leadership from Western Michigan University and has been involved in education his entire career from classroom teacher to Principal to Superintendent. He taught in Fraser Public Schools and was a Principal in Plymouth Canton Schools and Assistant Superintendent in both Wayne-Westland and Harper Woods Public Schools. He served on the board

of the Canton Community Foundation and following his retirement, Sam served as Interim Superintendent of Frankfort - Elberta Area Schools for a year and currently serves as the Chair of the Planning Commission of Frankfort, MI.

Nick Brandon, Executive Director, Communications & Marketing, Plymouth Canton Schools

A graduate of Ohio State University, Nick received his BA in Journalism and teaching and was a classroom teacher in the Plymouth Canton Schools. In 2016, Nick joined the PCCS Superintendent's Leadership Team as Executive Director of Communications & Marketing. Nick oversees the district's entire communications and marketing actions and initiatives, leading a department that also includes 88.1 The Park (the student-run radio station at Plymouth-Canton Educational Park), the P-CCS Community Education Program, and the district Print Shop. He resides in Plymouth with wife Leigh and daughters Ileana (7) and Blake (5). Along with his work for P-CCS, Nick (a lifelong musician himself) is the Founder / Director of the In the Band Music Appreciation Studio, a non-profit music studio that provides community, access, and support for student musicians in the Plymouth-Canton area.

Marlene Donoghue, President Creative Health Products, Inc.

Marlene is currently the President of Creative Health Products, Inc. and was previously President of Great Lakes Instrument Service, Inc. the first woman-owned and operated FAA-licensed aircraft instrument shop. Previously Marlene was a registered nurse for 16 years and served 6 years on the Advisory Board of the Community Foundation of Plymouth. Marlene and her late husband of 62 years have 3 children and 2 grandchildren. She enjoys long distance train travel, small ship cruising, classic cars, theater, classical music, and collecting reproducing pianos, antique linens, antique silver and kaleidoscopes.

Kim Fisher, Managing Partner, New York Life

Kim is the Managing Partner of the Greater Detroit Area for New York Life Insurance. She holds her 73Securities Registration licensing and works in Southfield. She was 1 of 40 Chosen for Accelerated Leadership Program, NYL and has certification in Women and Executive Leadership, from Cornell University. Formerly she worked for NEW YORK LIFE INSURANCE COMPANY as the senior partner of the Dallas-Fort Worth, office in Texas where she led them to become one of top 5 flagship offices across 150+ offices and prior to that she was the Corporate Vice President of the Women's Market Division of New York Life in New York.

Kim has served locally as the Vice President and Interim President of the Wayne Chamber Board and Habitat for Humanity and currently is a member of the Rotary Club of Plymouth AM and serves on their Foundation Board.

Pamela Hall , Mortgage Broker

Pamela has over 25 years in the mortgage and banking industry. She graduated from the University of Michigan (BSA) and holds an MBA from Wayne State University in Marketing and Managerial Economics and Finance. Pam is currently a Senior Loan Officer for Union Home Mortgage in Northville, MI. The roots of her career started in Plymouth, MI where she opened and managed Sunbelt National Mortgage for several years (later it became First Horizon Home Loans and MetLife Home Loans). In addition to her full time position, Pam teaches classes at the Michigan Institute of Real Estate and Schoolcraft College. Her love of music came from years of training as a dancer and pianist, and later becoming a dance instructor. She is also on the board of Tipping Pointe Theatre in Northville.

Dr. Michele Kelly, Dean, Schoolcraft College

Michele Kelly, Ph.D is the Dean of Liberal Arts & Sciences at Schoolcraft College. She holds a Doctorate in Education Administration from University of South Carolina and was previously the Associate Dean of Arts & Sciences at Macomb Community College. Dr. Kelly's undergraduate degrees are both in Communication and her specialty millennial faculty and communication curriculum. She was formerly the Associate Dean of Arts & Sciences at Macomb Community College where she also served on the Anton Art Center Board as well as the Macomb County Arts Commission. Michelle and her husband, who works for Rotary International, have two daughters and live in Farmington Hills.

Hayley Koetje, Luna Tech3d

Hayley is a graduate of Grand Valley State University and has over 15 years of experience in business development, event management, and community and client engagement. Currently Hayley works for Lunatech3d specializing in Google Interactive Tours and Spin Tours. She has worked for non-profits like Growth Works in Plymouth as the Manager for Training & Consulting as well as serving as Vice President of Business Development for a healthcare outsourcing company. Hayley is passionate about animal welfare and serves on the Advisory Board for the Animal Farm Freedom Sanctuary which is non-profit that saves animals from abuse and neglect. She is an Ambassador with the Livonia Chamber of Commerce and Plymouth Chamber of Commerce.

Sue Noetzel, Arts Advocate

Sue grew up Taylor and received her BS in Industrial Engineering from the University of Michigan in Ann Arbor (UM-AA). She and her family have lived in the Plymouth community since 1992. Married to Dan (mechanical engineer (UM-AA) at DTE's Fermi II) for 27 years and have 3 children. Sue has been involved in the arts in the community for many years having been on the board of the Plymouth Community Arts Council. Currently Sue serves on the fundraising and marketing committees.

Aaron Reeder, Bank of Ann Arbor

Aaron is the Vice President - Commercial Lending for the Plymouth District for Bank of Ann Arbor - who have been the Presenting Sponsors of the Michigan Philharmonic for the past 5 seasons. Aaron graduated from Eastern Michigan University with a B.S. in Chemistry, and completed his MBA and M.S. in Finance from Walsh College. He also serves on the Associate Board of Ambassadors of the American Cancer Society in metro Detroit, where he has been President for the last two years, and serves on the finance committee of Our House in Washtenaw County. Aaron is married to his wife, Jacquelyn, and they have two children, Brennan and Audrey. Outside of work he enjoys golf, going up north and attending his children's sports and activities.

Donald M. Soenen , President, Plymouth Arts & Recreation Complex

Don Soenen is Chairman and CEO of Sensors, Inc., based in Saline, and Chairman of the Board of All Weather, Inc. based in Sacramento, CA and Hunt Valley, MD. Don is the current founder and President of the Plymouth Arts & Recreation Complex and also chairs the Blue Ribbon Business/Education Panel for the Plymouth Canton School District.

Sue Voyles, Word and Vision

Sue holds a Master of Arts degree in Journalism and is the founder of Word and Vision Consulting Company serving as a writer and Life Coach. She was the founder of Logo Communications, an award-winning PR and Marketing agency serving SE Michigan, which she ran until her retirement. She has also served as a Chaplain and currently works with Hospice Care.

Sue has experience in writing and marketing and communications as well as planning and hosting special events. She is part of the International Coaches Federation and formerly served on the boards of the Association for Women in Communications and was Past President of the Detroit chapter of Women in Communications.

Alyssa Wells, PhD, Historical Musicology

Alyssa is an educator, writer, and advocate for local music education. She is currently completing her PhD in Historical Musicology and Rackham Merit Fellow at the University of Michigan. In addition to her studies, Alyssa currently works as an editor for The Gershwin Initiative and serves local and international nonprofit organizations.

In 2017, Alyssa became a board member for the Ypsilanti Youth Orchestra. Since then, she has taken on various other roles in nonprofit arts organizations, including consulting for the Marching Pageantry Arts Museum and volunteering for the Marching Arts Access, Safety, and Inclusion Network. Her dissertation explores the roles of race and gender in American marching band culture through ethnographic and archival research. In addition to earning minors in the areas of Renaissance music and ethnomusicology, Alyssa's work on East German composer Hanns Eisler has been published in the Danish Yearbook for Musicology and funded by the German Academic Exchange Service (DAAD). Prior to moving to Canton, Michigan, she attended University of Massachusetts Amherst. There, she earned a M.M. in Musicology and a M.A. in German & Scandinavian Studies. Alyssa attended Western Michigan University as an undergraduate, double-majoring in music (trombone) and German. In her free time, Alyssa enjoys going camping and hiking with her husband, Mike, and dog, Gustav (named for Gustav Mahler, Holst, and Nyquist).

EX-Officio Ronald H. Frechen, Treasurer

Ron Frechen is a retired CPA, formerly a partner of The Rehmann Group. He has over 30 years experience in auditing and consulting with nonprofit organizations.

Ex-Officio Audrey Mistor –Past President

Audrey has over 30 years of highly successful banking, financial services and management experience. She currently serves as Executive Vice President and Wealth Management Group Manager for Frist Merchants Bank (formerly Monroe Bank & Trust) Previously, Ms. Mistor was the Community President for MBT's North Region. Additionally, she held the position of President of Main Street Bank and spent 20 years with Michigan National Bank (now Bank of America) and Republic Bank

Michigan Philharmonic – Staff

Beth Stewart – Executive Director

Nan Harrison Washburn – Music Director & Conductor

Faith Demorest – Orchestra Personnel Manager and Music Librarian

Catherine Byrd – Bookkeeper and Admin Support – 734 451-2112 (w)

Nancy Davidson – Education Programs Coordinator

Hektor Qyteti – MPYO Conductor

Dennis Carter – MPYO Flute and Wind Ensembles



President's Report 2023-2024

The Michigan Philharmonic's 78th season was a tribute to our award-winning Conductor and Music Director, Nan Harrison Washburn. We are grateful for her 25 years of dedication to the unifying power of live music!

I have to commend the way every one of our stakeholders continue to respond to the challenges facing Orchestras and performing Arts Organizations around the country. The Board of Directors, in consultation with Executive director Beth Stewart and Music Director Nan Washburn have continued to adapt and experiment with new ways to fulfill our mission to provide:

- Innovative Classical Music Programming
- Education for People of All Ages
- Geographic Enrichment Through Community Engagement

We especially would like to commend you, our stakeholders and supporters, who recognize the importance of music and the arts to the health and well being of our communities. You have stepped up this past year! Your extraordinary generosity ensured that, despite the challenges, we still ended up our fiscal year very close to break even. Thank you.

We are also grateful for our extraordinary and innovative Music Director and Conductor, Nan Washburn, who completed her 25rd year with the Orchestra, another NANiversary! Winner of The American Prize in Orchestral Conducting, professional division, 2013, The American Prize Ernst Bacon Memorial Award for the Performance of American Music, professional division, 2016, and 19 ASCAP Awards for Adventurous Programming from the League American Orchestras, Nan Washburn is one of the most innovative and dynamic conductors working in the U.S. today. The musicianship of this Professional Orchestra under her leadership continues to gain local, regional and national attention.

Michigan Philharmonic's Educational Program had another momentous year! With over 100 students receiving professional instruction and performing in the Youth Orchestra programs, Nancy Davidson, our Education Programs Coordinator, Hector Qyteti, the MPYO Conductor, and Dennis Carter, MPYO Flute and Wind Ensemble Conductor, were very busy. Thank you Hector, Dennis and Nancy! On a sad note, Dennis will be stepping down as director of the Youth Orchestra Wind Ensemble due to schedule constraints for this in-demand Flutist. He will continue performing with us and we are grateful for his service. The Michigan Philharmonic Youth Orchestra continues to be one of the premier youth orchestra programs in the region!

Our award winning CLASSical Music Education Outreach and Composer in Me programs for 3rd and 4th graders mostly continued in person this year for four participating school districts. I had the distinct pleasure of attending 2 of the 6 Koncerts for Kids. Several thousand 4th graders from the Wayne Westland, Garden City, and Plymouth Canton school districts were enthusiastic patrons at Koncerts for Kids! For the pre-school set our Tiny Tunes Saturday morning series continues to be well received at the PARC.

Our organization relies heavily on its Board of Directors. This year we welcome several new Members. Sue Voyles, a Marketing and Public Relations executive who has been instrumental in helping us craft our marketing image over the past couple of years and Kim Fisher, Managing Partner, New York Life, with a strong background in business and several years of quiet involvement with the Michigan Phil as a volunteer. We are grateful for the willingness of Sue and Kim to share their energy and experience as the members of the Michigan Philharmonic Board of Directors. Thank you to Gail Greiger, Executive Director at the Plymouth Arts & Recreation Complex, who completed her board term this year. A big Thank you to all our Board Members for their service and support.

For more years than I can remember, Faith Demorest has served as the Philharmonic's personnel director and music librarian, responsible for ensuring we have a full orchestra to play at each concert. While she will continue to play her Violin with us, she has turned over responsibility for organizing the musicians to Chris Wheeler, Principal Oboe, who is looking forward to learning more about the administrative side of the performing arts. Thank You for all your years of service, Faith!

A special thanks goes out to our Volunteers, without whom we would not exist.

Finally, I would like to thank our Musicians, without whose dedication and hard work, music would not happen. Please keep them in your thoughts and prayers as they are being affected more than most in these trying times.

On behalf of the entire Board of Directors, Beth Stewart, our stellar Executive Director, and Nan Washburn, Music Director and Conductor extraordinaire, we thank all of you- staff, musicians, patrons, supporters and our many volunteers- for your dedication and support. None of this would happen without you! We have an Exciting season coming up. We invite you to get your Season Tickets and join us as we celebrate Nan Washburn's 26th Anniversary as Music director and Conductor and the Michigan Philharmonic's 79th season. ***All We Need is Music!***

Sincerely,

Christopher L. Belcher

Board President, Michigan Philharmonic



Executive Director's Report - Season 78 2023-2024 Beth Stewart

The Michigan Philharmonic celebrated quite a year for our 78th season. The most significant was celebrating Nan Washburn's 25th season with the Michigan Phil. Nan curated a terrific season to celebrate which saw us perform 5 summer concerts, Plymouth in Kellogg Park, Kensington Metropark, Campus Martius Park, Port Austin and the Ford House in Grosse Pointe. At our concert in CMP I was honored to accept the Spirit of Detroit Award for the

orchestra from Detroit City Councilman, Coleman Young, Jr. This was a great honor for the orchestra showcasing our reach throughout SE Michigan. We performed for a second year in a row in Port Austin in Michigan's "Thumb" area and were very well received garnering headlines in a number of the small newspapers still active in the area.

I was also honored to be give the Ruth Whipple Award by the City of Plymouth for service to the community. Ruth Whipple was one of the Mayor's of Plymouth back in the 1940's and she led the way for women to become activists in the community.

Our season kicked off in September and every concert was a success with increasing numbers and sell-outs during the year.,

We honored Nan's 25th season as our Music Director and Conductor and inducted a lot of our supporters into the "Nan Fan" Club.



POWERHOUSE VOCALS • #1 HITS • GENRE-DEFYING PERFORMANCES

THE NEW Divas
USE CODE **DIVAS50**
FOR 50% OFF

April 18, 2024 at 7:30 pm
MUSIC HALL CENTER FOR
THE PERFORMING ARTS
ACCOMPANIED BY
THE MICHIGAN PHILHARMONIC

Get tickets: glatzconcerts.com Attila Glatz

The Michigan Phil was invited by PBS to be part of an evening with The Divas! And we were the accompanying orchestra at The Music Hall for the Detroit appearance of the new DIVAS who will be part of a PBS production. This was a great experience and we were honored to be the orchestra asked to perform.

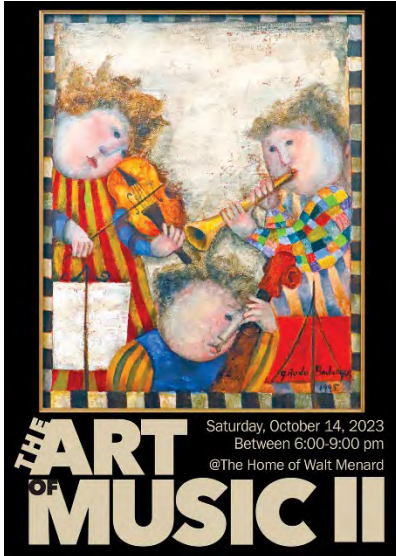
Our educational programs continue to be one of the hallmarks of our organization and the CLASSical Music Outreach Program, The Michigan Philharmonic Youth Orchestra and Tiny Tunes are great programs we do for thousands of students each year. In addition, several of our visiting guest artists and composers shared their music and talents with students from the Arts Academy and the High School Orchestra. Sean Jackman and Michael Edwards are both great partners with our program in the PCCS school district.



We closed out our season with a big concert called Sci-Phonic ending with the youth symphony and wind ensemble joining the orchestra for Star Wars! It was a wonderful way to close out a spectacular year.

Fundraising wise – we held some smaller music programs on the Lawn of the Wilcox House in downtown Plymouth and at the home of Walt Menard for a fun Wine Night called “The Art of Music”

We began a partnership with St. John’s



providing music ensembles as part of some of their events.

During Christmas we did a Holiday Brunch featuring our Michigan Philharmonic String Quartet and in the Spring our Jazz Trio was featured for a Spring Brunch in their new Garden Pavilion. We look forward to more events with them this season.



Audiences responded to a great season by filling the venues for our concerts:

September 2023	400/600
October 2023	500/500
November 2023	500/550
December – Plymouth 2023	700/1000
December – Northville 2023	500/500
January 2024	350/350
February 2024	650/800
March 2024	450/600
April 2024	400/600



Music Director's Report

The Michigan Philharmonic's 2023-2024 season, "All We Need is Music," was a special one for us and especially me in celebrating my 25th season as music director. My how time flies when you are having fun! Making music is definitely more fun than writing this report so as always, I'll try to be brief.

Artistic recognition:

- WRCJ 90.9 FM again aired two of our performances this season. We are still among only a handful of organizations, including the Detroit Symphony, Detroit Opera and Ann Arbor Symphony, regularly being broadcast on this public radio station.
 - "Music of La Mer" — November concert aired February 4
 - "Miniature Masterpieces — Captivating Keyboards" January concert aired ??

Guest Soloists:

- To open our season oboist Nancy Ambrose King was joined by her son also our principal clarinetist Ryan King with a dazzling duo performance and world premiere of Miguel del Águila's *Concierto con Brio*.
- For our Halloween concert, the ever-popular guest Geff Phillips served both as a stellar vocalist and entertaining narrator.
- Principal flutist Dennis Carter II was front and center for our November concert to perform the beautiful work the Deep, Deep Sea by guest composer Zhou Long. Dennis played both alto flute and piccolo on this magical work.
- For this year's holiday concert, we featured our principal violist Jessica Lipon on two extraordinary works, *Passacaglia* by Rebecca Clarke and *Christmas Dance* by Ralph Vaughan Williams
- In January, Angie Zhang delighted our audience with her expertise on both harpsichord and pipe organ performing the *Harpsichord Concerto* by Wilhelmine von Bayreuth, Shruthi Rajasekar's *Solace* for solo organ and then was joined by flutist Dennis Carter and co-concertmaster Yuri Popowycz for our spirited finale, Bach's *Brandenburg Concerto No. 5*.
- On our February pops concert "Motown meets Mamma Mia" the guest vocalists were the sensational trio of Kathryn Calzone, Taylor Haring and, as last-minute substitute, Audrey Kline. Lauren Norris was originally scheduled to sing with us but she had to withdraw due to illness and Audrey stepped in with one day notice and saved the day.
- Plans had to be changed again for the March concert when our cello soloist, Deborah Pae, injured her back a week before the concert and was not able to play the originally scheduled work, Anna Clyne's *Dance*. I quickly changed the program using our Tchaikovsky-theme of the program to switch out the concerto with Tchaikovsky's original *Sugar Plum Fairy* from the Nutcracker Ballet and the contemporary homage to that work, *Plum Sugar* by Oscar-nominated, Emmy-winning composer, Laura Karpman.

Featured composers this year who were in attendance for the final rehearsals, pre-concert talk and performance:

- Miguel del Águila
- Zhou Long
- Shruthi Rajasekar

Big Repertoire—fabulous Michigan Phil performances!

- *Symphony Fantastique Op. 14* (1830) Hector Berlioz
- *La Mer* for Chamber Orchestra (1905) Claude Debussy (arr. Iain Farrington)

- *Brandenburg Concerto No. 5 in D major, BWV 1050.2* (1721) Johann Sebastian Bach
- *Symphony No. 5 in E Minor, Op. 64* (1888) Pyotr Ilyich Tchaikovsky

Smaller or lesser-known works, new discoveries, audience favorites:

- *The Wreckers Prelude* (1904) Ethel Smyth (arr. Nan Washburn)
- *Cembalo Concerto in G* (1734) Wilhelmine von Bayreuth
- *Sonata No. 3 in C major* (1804) Gioachino Rossini

New exciting music!

- *Concierto con Brio* (2022) Miguel del Águila (World Premiere)
- *The Deep, Deep Sea* (2007) Zhou Long
- *Son of Pandu* (2018) Shruthi Rajasekar
- *Plum Sugar* (2000) Laura Karpman

Summer Successes:

- “An American Salute”, June 29, was back outdoors in Kellogg Park. With our wonderful guests Carl Battishill and Richard Whipple, we played to a wonderful audience of 1500.
- Our “Car Tunes” program was performed twice, on July 13 at Kensington Metropark for a large crowd of 4000 and again August 23 at the Edsel and Eleanor Ford House for an enthusiastic audience of 1000.

A new collaboration:

- Detroit Public Television invited our orchestra to perform for the PBS touring “Divas” concert program at the Music Hall in Detroit. It featured several international vocalists and also our very own, Audrey Kline again stepping in for another singer unable to do the performance. The hugely successful concert was led by Italian conductor Beatrice Venezi.

Continuing dedication to Education, Outreach and Community Engagement:

- Michigan Philharmonic Youth Orchestra directors Hektor Qyteti and Dennis Carter along with manager Nancy Davidson have continued their great work keeping MPYO going and growing. The students in all five ensembles performed concerts in December and in May at the PARC Wilcox Theatre and a fun pops concert in June back in Kellogg Park.
- MPYO also joined the Michigan Phil for two side-by-side performances, in November (with Sinfonia) and again in April with the top-level orchestra and the MPYO Wind Ensemble.
- For our February pops concert, the Garden City High School Choir, Kayla Cunnien, director, also performed with us on some fun Disco hits.
- On May 5, we repeated our Sci-Phonic program in Brighton with a special side-by-side performance with the Brighton High School Orchestra.
- I continue to represent the Phil when I participate in various other professional activities. This year, I gave the following talks/presentations:
 - Fox Run, September, “The Insider’s View of the Orchestra”
 - AM Rotary, September, an overview of the 23-24 season
- Thanks to Beth, we had several of our guest artists visit the Arts Academy also at the high school giving workshops on performing and composing:
 - Nancy King, oboe, Ryan King, clarinet and Miguel del Águila, composer
 - Shruthi Rajasekar, composer
- Our CLASSICAL Music in the schools and Koncerts for Kids finally were scheduled and terrific successes in Plymouth-Canton, Wayne-Westland and Garden City school districts. Special thanks to board member Sam Barresi for helping to arrange!

- We had great success with our 2nd season of our “Tiny Tunes” 4-concert series. We again enjoyed collaborations with two other PARC organizations to have students perform with us from Ovation Performing Arts and Artistry Dance
 - Saturday, Sept. 16 – “Meet the Instruments” - an introduction to the instruments
 - Saturday, Nov. 17 – “Peter & the Wolf with other Musical Stories”
 - Saturday, Feb. 24 – “Rhythm & Dance”
 - Saturday, May 11 – “Live with the Michigan Phil Youth Orchestra”

A huge thank-you to Ken Kaiser our videographer who has continued to volunteer much of his time and talents recording our performances.

Special thanks to our president Chris Belcher, vice president Narendra Sheth, and secretary Steve Chrypinski, and to all our board members for their enormous contributions of time and expertise. A very special thank you to treasurer Sue Hoy for stepping in as interim bookkeeper after the sudden passing of Catherine Byrd. Thanks also to our wonderful volunteers Lisa Kaberna, Mary Tavana, Rick Stanley, Jeanette Sullivan and Cathy Hasse for all they contribute in time and energy; and thank-yous all around for our dedicated staff Nancy Davidson, Hektor Qyteti, Michael Grabowski for his production work and marketing help and Ken Voyles, our marketing consultant.

I want to personally thank our executive director Beth Stewart again for her tremendous work throughout another challenging year and to veteran board member Don Soenen who continues to be the orchestra’s major supporter and cheerleader.

Applause are in order for retiring personnel manager and librarian Faith Demorest for the 20 plus years of dedication to the orchestra. MPYO Wind Ensemble and Flute Choir Director Dennis Carter is also taking his final bow this season in order to be able to play more often for the Detroit Opera and Fox Theater touring shows. We are lucky that he will still continue with us as Michigan Phil Principal Flute.

And posthumously, I know the entire organization wants to thank and honor Catherine Byrd who for many years served as our bookkeeper, music librarian and provided countless hours of administrative support to the orchestra. The jobs she did for the Michigan Phil quietly behind the scenes were many including and not limited to office management, donor management, box office, program editing and formatting. She has left big shoes to fill organizationally and an incredible hole in our all our hearts.

Respectfully,
Nan Washburn, Music Director and Conductor



Michigan Philharmonic Youth Orchestra (MPYO)

The 2023-24 season for the Michigan Philharmonic Youth Orchestra started strong but faced some headwinds after the opening on Tuesday, September 12, 2023. The season concluded on June 4, 2024, with the Pops Concert in Kellogg Park.

Auditions & Membership

This year, only one audition day was scheduled, based on the availability of the conductors. Previously, we held auditions twice, usually in May or June and again in August. The audition policy, as stated in the MPYO Handbook, requires all new students to audition; current members may audition to improve their position in an ensemble or be promoted to a new ensemble. Through social media advertising and the recruiting efforts of the conductors, 40 students signed up for auditions, 33 of whom were new students, seven were current members.

Of the 33 new students who signed up to audition, four were “no shows”, three were not accepted (due to skill level), and 26 were offered positions in one or more of the ensembles; twenty of the new offers were accepted. Attendance and membership declined during the year for a myriad of reasons: five students cited scheduling conflicts with other extracurricular activities, depression, disliking the varied skill level of other student musicians, behavior issues, and grades. We also had a student who showed up to only one rehearsal during the second semester and was not allowed to participate in the Spring Concert.

Although gaining and losing several students throughout the year, the overall number of students decreased by three students in total. The season began with a roster of 69 students and ended the season with 66 students, after gaining three students at the start of second semester. Ten of our students graduated from high school this year. One will return in the Fall to play cello for Youth Symphony while she attends a local college.

Of all the ensembles, the Flute Choir was affected the most by attrition. We started the year with four students in the Flute Choir and ended the year with just three. Students who had been provisionally accepted to Youth Symphony, while continuing to play and grow in Flute Choir or Wind Ensemble, ended up only showing up for Youth Symphony. This forfeits the purpose of the Flute Choir and Wind Ensemble which were established to be feeder-ensembles to the higher Youth Symphony ensemble where the music is much more rigorous.

Membership for the 2023-24 season (including students who participate in more than one ensemble):

- Strings ensemble: 13 members, plus 10 from Sinfonia, 1 from Youth Symphony (none were new)
- Sinfonia ensemble: 24 members, 5 from Youth Symphony (2 new)
- Flute Choir: 4 members (2 new)
- Wind Ensemble: 14 (4 new)

- Youth Symphony: 36 members (4 new)

Tuition

Annual tuition (for two semesters) remained at the rates of: \$325 for Strings, Sinfonia, and Flute Choir, \$350 for Wind Ensemble; \$375 for Youth Symphony; the \$150 additional ensemble was waived only in cases where students were asked to mentor; \$650 family maximum. Rehearsals were held every Tuesday evening throughout the school year. Two rehearsals were missed at the start of the second semester for inclement weather.

Tuition payment was online via Bonterra/NetworkForGood (NFG), as well as cash, checks, credit cards. Although there is a service fee per transaction on NFG, many parents opted to include it with their payment. Total tuition for the regular season was approximately \$23,687 (not adjusted for NFG transaction fees). For the Pops Concert, tuition was charged at a rate of \$30 per student, \$50 family maximum, which is used to cover the cost of the stage rental. Total tuition collected for Pops was \$720.00 (via NFG and in-person). Some of the Pops participants were guest musicians who were not charged to participate.

The MPYO received a donation from John Schmidt of \$300 to cover tuition for students who are unable to pay. Mr. Schmidt once again generously donated in the name of his late wife Patty, who supported our organization for several years.

Performing Opportunities

MPYO members were given five opportunities to perform in the 2023-24 season. This year, we opted not to hold the Fall Gala.

- The Sinfonia played in a side-by-side performance of George Frideric Handel's "Water Music" with the Michigan Philharmonic on Friday, November 10, 2023, at St. Kenneth in Plymouth in the "La Mer" concert.
- The first semester ended with the Winter Concert at the Jack Wilcox Theater at PARC on December 5, 2023. Due to his busy performing schedule, Dennis Carter was unable to conduct at this concert. Local flute teacher and performer Donna Kallie conducted the Flute Choir and Wind Ensemble. Although she attended rehearsals prior to the concert, some parents expressed their concerns about having a different conductor for the concert than the one with whom the students normally rehearse.
- Youth Symphony and Wind Ensemble members performed a "side-by-side" of "Star Wars Medley" with the Michigan Philharmonic on Saturday, April 27, 2024, at Logan Auditorium in Salem High School, Canton.
- The Spring Concert concluded the second semester on Tuesday, May 7, 2024, in the Jack Wilcox Theater at PARC.
- Tiny Tunes: On Saturday, May 11, 2024, the Sinfonia ensemble had an additional opportunity to perform in the final concert of the new series offered by the Michigan Philharmonic. Hektor Qyteti conducted 16 Sinfonia students along with Wind Ensemble and Youth Symphony percussionists James Moore and Janelle Snowden.
- The season ended on June 4, 2023, with the Pops Concert that was held in Kellogg Park in downtown Plymouth. Dennis Carter conducted the Wind Ensemble; Hektor Qyteti conducted the combined Youth Symphony and Sinfonia orchestra. Alumni, friends of

current members, and some members of the Plymouth Community Band put on an exciting concert to mark the end of the MPYO season and the start of summer.

Winter Concert “Side-by-Side” Finale, December 5, 2023



“Tiny Tunes,” May 11, 2024

Upcoming Changes for the MPYO

- **Concert Venue:** For the coming 2024-25 season, the Winter and Spring concerts will be held at the Village Theater at Cherry Hill in Canton. MPYO concerts have been hosted at the PARC's Jack Wilcox Theater for the past two years. Given the audience size, theater set-up, and managing the box office on concert night, we have outgrown the PARC theater. Seating and comfortable air flow during the concerts are a concern with 90% of the bleacher seats and additional chairs on the floor occupied by the audience. Theater set-up and managing the light booth during the concerts is provided by the Michigan Philharmonic's stage production manager Michael Grabowski. Theater set-up requires about eight hours of labor, partially due to the extra stage space needed for the "side-by-side" performances of combined ensembles. The MPYO also relies on Michigan Philharmonic volunteers to assist at the will-call desk and with taking tickets on concert nights.
- **Flute Choir & Wind Ensemble Conductor:** Due to his busy performing schedule, Dennis Carter resigned from his position as conductor at the end of this season. For the past five years, Dennis has been conducting the Flute Choir and Wind Ensemble. Under his tutelage, the Wind Ensemble grew from three members to 15. Most of the students in Wind Ensemble have become members of the Youth Symphony. He will be greatly missed in the MPYO. Dennis plans to continue helping us out in the CLASSical Music Outreach Program.



Dennis Carter conducts at MPYO Pops Concert, June 4, 2024

CLASSical Music Outreach Program

The CLASSical Music Outreach Program also faced some challenges both from our school customers, the musicians, and the weather for the 2023-24 season. Both third and fourth graders

in 25 elementary schools across three local school districts were visited by a quintet and solo musician followed by a “Koncert for Kids” from the Michigan Philharmonic.

Program Description

The program is designed to introduce classical music and the various instruments that make up an orchestra to third and fourth grade students. The third-grade program consists of an in-class demonstration by a quintet of Michigan Philharmonic musicians showcasing string, woodwind, brass, and percussion instruments. These demonstrations teach students about the various instrument families of the orchestra, how to recognize individual instruments, and show how each instrument produces sound. The fourth-grade program consists of a visit by a solo musician which gives students a preview of the music they will be hearing at a “Koncert for Kids” in late May. Nan Washburn programs the “Koncert for Kids” specifically for fourth graders to teach about many aspects of music, including: the different musical instrument families, composers, the composition process, how to “conduct along,” and how to listen for details in the music.

Schools

Participating this year in the program were Garden City Schools, Wayne-Westland Schools, and Plymouth-Canton Schools. Although a regular customer for the program, Taylor School District experienced both staff changes and funding issues and did not proceed with the program this year. Van Buren Township also did not participate in the program again this year.

Wayne-Westland Schools requested the quintets and solo musician visit their 10 elementary schools in the October and November (rather than March and April) due to the scheduling of standardized tests that are administered in the Spring. The Wayne-Westland “Koncert for Kids” was still held in May. While this is not ideal in keeping with the design of the program, Wayne-Westland Schools was very appreciative of the accommodation and would like a similar schedule for the 2024-25 school year. The musicians were also glad for the scheduling to be spread out given the quantity of school performances.

The musicians visited Plymouth-Canton Schools in the Spring, which has 14 elementary schools. This typically takes five business days to complete all the schools. Schedule challenges this year included:

- On March 21, the quintet was reduced to a quartet due to a family medical emergency of the trumpet player scheduled for that day. With a bit of improvisation, an old trumpet was found among the Michigan Phil’s equipment and Lynn Koch, percussionist and former band director, was able to explain the brass-instrument family to the three schools that were visited that day.
- On March 22, the last day of quintet visits for the year, a snowstorm occurred during the morning commute, so the performances were canceled. The visits to the four schools in the Plymouth-Canton district were re-scheduled and completed in May, just prior to the “Koncert for Kids” performances.

Once the school visits were complete, four “Koncerts for Kids” were performed by the Michigan Philharmonic in late May: one concert each in Garden City (to both third and fourth graders) and Wayne-Westland Schools, and two back-to-back concerts for Plymouth-Canton Schools.



2024

“Konzert for Kids,” Logan Auditorium, May 24, 2024

Musician Remuneration



A total of eight musicians visited 25 elementary schools this season. The remuneration of the musicians has been done on a half-day basis, regardless of the number of school visits scheduled for each half-day, along with a small travel stipend. While there is no specific verbiage for education visits in their union contract, some of the musicians have requested that this program reflect the pay structure that is used for concerts. Also, some of the musicians have indicated that they will not take this performing opportunity until the pay structure is altered. Going forward the pay structure for this program will be adjusted to at least reflect pay for each school visit.

Treasurer's Report

The accounting policies of the Michigan Philharmonic conform to generally accepted accounting principles. Revenue through public support and grants is recognized when contributed or unconditionally promised and revenue for admissions, contract services and other is recognized when earned. Contributions that are restricted by the donor are reported as increases in temporarily or permanently restricted net assets depending on the nature of the restrictions. When a restriction expires temporarily restricted net assets are reclassified to unrestricted net assets.

The Michigan Philharmonic is a not-for-profit Michigan corporation recognized as exempt from Federal Income Taxes pursuant to Section 501 (c) 3 of the Internal Revenue Code. The Philharmonic is exempt from Michigan Sales and Use Tax in accordance with P.A. 167 of 1933 and P. A. 94 of 1937, both as amended.

It should be noted that we were the beneficiaries of Ms. Linda Betzer, a patron of the arts, left the Michigan Philharmonic a gift in her Will to the tune of \$400,000. The Betzer Endowment was made without any restrictions. This is a Board Designated Fund with the intention of taking a 5% distribution each year. The Board can increase this distribution if necessary for budgetary purposes.

Fund activity for 2023-2024 was as follows:

7/1/2023 Beginning Balance \$363,491

6/30/2024 Ending Balance \$343,780

2023-2024 Distributions \$62,468

Other items of note:

- We are making great progress on in-person concert attendance.
 - Season ticket sales exceeded the projected budget by 14%, nearly 45% more than previous year;
 - Admissions exceeded the projected budget by 34%, nearly 31% more than previous year
- We received a MCACA grant in the amount of \$11,050
- Three Fund Campaigns were conducted: "Tis the Season of Giving" in December 2023 raised \$15,800; MP Board Challenge in May raised \$4000; and May Match Month for Education raised \$13,585
- Two special events – In July, the Wilcox concert and in October, "Art and Music", held at the home of Walter Menard, raised \$7,739 between ticket sales, sponsorships, and donations.
- Our Cruise Raffle was back and strong for this year, netting \$11,600 in income
- The Tiny Tunes program- income exceeded expenses by \$5790.00 for the year
- Grant funds and Giving for Education achieved 46% of budget

- We received a State of Michigan COVID relief award of \$25,000

For the year, income exceeded budget projections by \$8,945. and surpassed the previous year by nearly \$27,500.

- We were able to return to all but one of the schools where many of our Contract Services take place. Contract Services Revenue exceeded budget by \$26,300 primarily due to the DIVA concert.
- Annual Giving from Businesses was \$10, 000 below budget
- Annual Giving from Individuals was down slightly, at 90% of budget expectations.

Budget Breakdown:

The Michigan Phil carried an annual budget of roughly \$527,000. Of this, approx \$364,700 or 69%, goes towards all Programming expenses. Of the total Programming Expenses, 19% of that is for the Educational Program.

Just over \$162,000, or 31%, goes towards Administrative expenses.

Educational Program Expenses of \$69,730 support the following:

- Michigan Philharmonic Youth Orchestra: \$36,165
- CLASSical Music Outreach Program, covering 5 area school districts: \$25,193
- Tiny Tunes Program : \$8371

The funding of the budget is accomplished through Earned Income and Other Income. Earned Income, a total of \$287,430, is comprised of the following and contributes to 57% of the budget:

- Ticket Sales \$93,187
- Contracted Services \$154,950
- Tuition \$24,185
- Program Book \$15,100

Other Income, a total of \$261,373, is comprised of the following and contributes to 43% of the budget:

- Grants \$41,105
- Fundraising \$19,652
- Donations \$158,807
- Misc Net Other Income \$41,809

Respectfully Submitted,

Susan Hoy, Treasurer

MICHIGAN PHILHARMONIC

Balance Sheet

As of June 30, 2024

	As of June 30, 2024	As of June 30, 2023	\$ Change	% Change
ASSETS				
Current Assets				
Bank Accounts				
10085 First Merchants - 128020611	16,373.88	23,702.43	-7,328.55	-30.92%
10300 Box Office Cash	160.00	160.00	0.00	0.00%
Total Bank Accounts	\$ 16,533.88	\$ 23,862.43	\$ (7,328.55)	-30.71%
Accounts Receivable				
1200 *Accounts Receivable	50.00	12,500.00	-12,450.00	-99.60%
Total Accounts Receivable	\$ 50.00	\$ 12,500.00	\$ (12,450.00)	-99.60%
Other Current Assets				
13000 Prepaid Expense	2,000.00	1,350.00	650.00	48.15%
Total Other Current Assets	\$ 2,000.00	\$ 1,350.00	\$ 650.00	48.15%
Total Current Assets	\$ 18,583.88	\$ 37,712.43	\$ (19,128.55)	-50.72%
Fixed Assets				
Total 14000 Furniture & Fixtures	\$ 0.00	\$ 0.00	\$ 0.00	
Total Fixed Assets	\$ 0.00	\$ 0.00	\$ 0.00	
Other Assets				
11140 Raffle Receivable	3,000.00	1,900.00	1,100.00	57.89%
15475 Betzer Endowment	343,779.57 *	363,491.41	-19,711.84	-5.42%
Total Other Assets	\$ 346,779.57	\$ 365,391.41	\$ (18,611.84)	-5.09%
TOTAL ASSETS	\$ 365,363.45	\$ 403,103.84	\$ (37,740.39)	-9.36%
*as of 6/30/24				
LIABILITIES AND EQUITY				
Liabilities				
Current Liabilities				
Accounts Payable				
2000 Accounts Payable	20,391.80	27,731.86	-7,340.06	-26.47%
Total Accounts Payable	\$ 20,391.80	\$ 27,731.86	\$ (7,340.06)	-26.47%
Other Current Liabilities				
2100 Payroll Liabilities				
Federal Taxes (941/944)	1,486.52	1,486.52	0.00	0.00%
MI Income Tax	-323.38	-306.38	-17.00	-5.55%
Total 2100 Payroll Liabilities	-201.04	-199.32	-1.72	-0.86%
Total 2100 Payroll Liabilities	\$ 962.10	\$ 980.82	\$ (18.72)	-1.91%
24010 Union dues withheld	141.11	90.47	50.64	55.97%
24020 Accrued Pension Liability	517.42	331.84	185.58	55.92%
25000 Deferred Revenue	6,690.00	28,300.00	-21,610.00	-76.36%
Total Other Current Liabilities	\$ 8,310.63	\$ 29,703.13	\$ (21,392.50)	-72.02%
Total Current Liabilities	\$ 28,702.43	\$ 57,434.99	\$ (28,732.56)	-50.03%
Long-Term Liabilities				
3365 Monroe Bank Line of Credit	10,150.00	9,850.00	300.00	3.05%
Total Long-Term Liabilities	\$ 10,150.00	\$ 9,850.00	\$ 300.00	3.05%
Total Liabilities	\$ 38,852.43	\$ 67,284.99	\$ (28,432.56)	-42.26%
Equity				
3900 Retained Earnings	335,818.85	325,672.23	10,146.62	3.12%
Net Income	-9,307.83	10,146.62	-19,454.45	-191.73%
Total Equity	\$ 326,511.02	\$ 335,818.85	\$ (9,307.83)	-2.77%
TOTAL LIABILITIES AND EQUITY	\$ 365,363.45	\$ 403,103.84	\$ (37,740.39)	-9.36%

MICHIGAN PHILHARMONIC
Budget vs. Actuals: YTD 2023-24
July 2023 - June 2024

	Actual	Total Yr Budget	under/over Budget	% of Budget
Income				
40000 Admissions	58,946.67	44,000.00	14,946.67	133.97%
40010 Admissions - Season	34,240.00	30,000.00	4,240.00	114.13%
41100 Annual Giving - Business	24,290.00	35,000.00	-10,710.00	69.40%
41200 Annual Giving - Individuals	117,178.00	130,000.00	-12,822.00	90.14%
41300 Annual Giving - Education		5,000.00	-5,000.00	0.00%
41310 Education Giving - Play it Forward	1,360.00	1,000.00	360.00	136.00%
41325 Annual Giving - MPYO	1,818.52	1,000.00	818.52	181.85%
41330 String Fellowship		700.00	-700.00	0.00%
41400 Tuition	24,185.00	28,000.00	-3,815.00	86.38%
41500 Special Programs Income			0.00	
41525 Tiny Tunes Income	14,160.00	16,000.00	-1,840.00	88.50%
Total 41500 Special Programs Income	\$ 14,160.00	\$ 16,000.00	\$ (1,840.00)	88.50%
42000 Contract Service Revenue (misc)	23,350.00	1,000.00	22,350.00	2335.00%
42050 Ford House	15,000.00	15,000.00	0.00	100.00%
42075 Kensington	22,000.00	22,000.00	0.00	100.00%
42120 Brighton	14,000.00	13,000.00	1,000.00	107.69%
42123 Prechter - WCCCD, Taylor	5,000.00	5,500.00	-500.00	90.91%
42130 Campus Martius	12,500.00	12,150.00	350.00	102.88%
42150 Port Austin	17,600.00	17,500.00	100.00	100.57%
42170 DIA	4,500.00	5,000.00	-500.00	90.00%
42190 Kellogg Park	19,000.00	9,500.00	9,500.00	200.00%
42205 Wayne-Westland Comm. Schools	7,500.00	7,500.00	0.00	100.00%
42210 Taylor Schools		6,000.00	-6,000.00	0.00%
42215 Garden City Schools	4,000.00	4,000.00	0.00	100.00%
42220 Plymouth Canton Comm. Schools	10,500.00	10,500.00	0.00	100.00%
Total 42000 Contract Service Revenue	\$ 154,950.00	\$ 128,650.00	\$ 26,300.00	120.44%
44030 Cruise Raffle			0.00	
44031 - Cruise Raffle Income	13,450.00	15,000.00	-1,550.00	89.67%
44032 - Cruise Raffle Expense	-1,844.78		-1,844.78	
Total 44030 Cruise Raffle	\$ 11,605.22	\$ 15,000.00	\$ (3,394.78)	77.37%
44035 Friends of Michigan Phil			0.00	
44039 Concert Raffle		1,500.00	-1,500.00	0.00%
Total 44035 Friends of Michigan Phil	\$ 0.00	\$ 1,500.00	\$ (1,500.00)	0.00%
45000 Grants	2,500.00		2,500.00	
Canton Community Found. - Educ.	1,755.00	1,200.00	555.00	146.25%
Education		10,000.00	-10,000.00	0.00%
MCACA	11,850.00	19,500.00	-7,650.00	60.77%
State of MI COVID Relief	25,000.00		25,000.00	
Total 45000 Grants	\$ 41,105.00	\$ 30,700.00	\$ 10,405.00	133.89%
46000 Other Income		4,000.00	-4,000.00	0.00%
46002 Special Fundraising Event Tickets	7,186.00	6,000.00	1,186.00	119.77%
46003 Special Fundraising Event Sponsor	426.42	5,000.00	-4,573.58	8.53%
46006 Concert Event/Concessions	126.17	1,000.00	-873.83	12.62%
Total 46000 Other Income	\$ 7,738.59	\$ 16,000.00	\$ (8,261.41)	48.37%
46007 MPYO Fundraiser	308.17	500.00	-191.83	61.63%
46010 Season Business Sponsorship	15,110.00	15,000.00	110.00	100.73%
Total Income	\$ 506,995.17	\$ 498,050.00	\$ 8,945.17	101.80%
Gross Profit	\$ 506,995.17	\$ 498,050.00	\$ 8,945.17	101.80%

	Actual	Total Yr Budget	under/over Budget	% of Budget
Expenses				
50100 Property Taxes		200.00	-200.00	0.00%
50200 Advertising	4,325.62	3,600.00	725.62	120.16%
50210 Special Fundraising Event Expense	5,908.00	4,000.00	1,908.00	147.70%
50230 Special Programs			0.00	
50231 Tiny Tunes Expense	8,371.00	9,100.00	-729.00	91.99%
Total 50230 Special Programs	\$ 8,371.00	\$ 9,100.00	\$ (729.00)	91.99%
50250 Contracted Services (misc)	21,660.25	1,200.00	20,460.25	1805.02%
50270 DIA	3,637.00	3,500.00	137.00	103.91%
50273 Kensington	22,357.63	22,000.00	357.63	101.63%
50275 Ford House	7,879.45	9,800.00	-1,920.55	80.40%
50290 Brighton	10,375.08	10,000.00	375.08	103.75%
50292 Kellogg Park	23,929.60	11,000.00	12,929.60	217.54%
50294 Prechter - WCCCD, Taylor	4,534.08	4,000.00	534.08	113.35%
50297 Van Buren Schools		4,500.00	-4,500.00	0.00%
50298 Taylor Schools		4,500.00	-4,500.00	0.00%
50299 Plymouth Canton Comm. Schools	9,874.80	7,900.00	1,974.80	125.00%
50301 Garden City Schools	4,410.40	4,800.00	-389.60	91.88%
50302 Wayne Westland Schools	6,474.40	6,700.00	-225.60	96.63%
52130 Campus Martius	8,017.62	6,600.00	1,417.62	121.48%
52160 Port Austin	13,300.45	17,500.00	-4,199.55	76.00%
Total 50250 Contracted Services	\$ 136,450.76	\$ 114,000.00	\$ 22,450.76	119.69%
50510 Payroll-Music Director	64,275.00	65,000.00	-725.00	98.88%
50520 Guest Artist Fees	8,700.00	3,500.00	5,200.00	248.57%
50521 Guest Artist Travel	538.58	500.00	38.58	107.72%
50530 Payroll- Orchestra	90,117.66	85,000.00	5,117.66	106.02%
50540 Payroll-Librarian	1,850.00	1,700.00	150.00	108.82%
50550 Payroll-Personnel Manager	7,850.00	6,500.00	1,350.00	120.77%
50600 Memberships & Dues	3,033.00	1,800.00	1,233.00	168.50%
50680 Education and Training	44.75		44.75	
50920 Fees - CC/Merchant/Bank	3,818.69	2,600.00	1,218.69	146.87%
50935 CRM - Network for Good	5,875.00	4,000.00	1,875.00	146.88%
50940 Fees - Music Licensing	2,093.96	2,000.00	93.96	104.70%
50960 Fees - Misc	95.00	50.00	45.00	190.00%
50970 Fundraising - Network for Good	1,375.00	1,500.00	-125.00	91.67%
51100 Gifts		100.00	-100.00	0.00%
51120 Insurance - Liability	4,278.00	5,000.00	-722.00	85.56%
51140 Insurance-Directors & Officers	450.00	450.00	0.00	100.00%
51400 Music Purchase	3,013.24	1,000.00	2,013.24	301.32%
51450 Music Rental	1,119.33	3,500.00	-2,380.67	31.98%
51490 Rehearsal Rental - MP & MPYO	11,215.00	15,000.00	-3,785.00	74.77%
51500 Venue Rental	10,868.88	5,000.00	5,868.88	217.38%
51560 Production-Equipment & Expenses	2,703.40	4,000.00	-1,296.60	67.59%
51590 Office Rent	22,765.00	22,000.00	765.00	103.48%
51710 Payroll-Exec Director	42,000.00	42,000.00	0.00	100.00%
51715 Patron Services Manager	780.00		780.00	
51721 Payroll-MPYO Manager/Ed. Coord.	10,800.00	11,000.00	-200.00	98.18%
51730 Payroll-Production	7,990.00	8,000.00	-10.00	99.88%
51800 Payroll Taxes	3,213.00	3,000.00	213.00	107.10%
51900 Pension	12,302.44	10,000.00	2,302.44	123.02%
52000 Phone	2,297.78	2,000.00	297.78	114.89%
52120 Postage - Fund Raising	2,200.00	200.00	2,000.00	1100.00%
52150 Postage	1,015.30	1,500.00	-484.70	67.69%

	Actual	Total Yr Budget	under/over Budget	% of Budget
52240 Printing - Fund Raising		250.00	-250.00	0.00%
52273 Printing - Brochure & Program	12,150.00	14,000.00	-1,850.00	86.79%
52275 Printing - Tickets	711.96	700.00	11.96	101.71%
52280 Printing - Promotions	769.19	500.00	269.19	153.84%
52290 Printing - Office Copier	4,861.58	4,000.00	861.58	121.54%
52710 Services - Audit	4,000.00		4,000.00	
52725 Services - Graphic Design	6,645.40	8,000.00	-1,354.60	83.07%
52730 Services-Fund Raising		1,000.00	-1,000.00	0.00%
52740 Services - Bookkeeping/Admin	12,408.00	18,000.00	-5,592.00	68.93%
52741 Services - Online QuickBooks	1,686.00	1,450.00	236.00	116.28%
52742 Services - Microsoft Licenses	1,497.68	1,400.00	97.68	106.98%
52745 Services - Marketing & PR	219.88	10,000.00	-9,780.12	2.20%
52760 Services - Video Recording/Editing	3,500.00	5,000.00	-1,500.00	70.00%
52770 Services - Website Design/Maint	1,560.90	1,400.00	160.90	111.49%
52780 Services - Internet Maintenance	589.23	400.00	189.23	147.31%
53040 Supplies-Office	2,890.91	2,000.00	890.91	144.55%
53041 Office Cleaning	635.00	950.00	-315.00	66.84%
53043 Office Expense	119.99		119.99	
53045 Supplies/Repair - Computer	586.68	400.00	186.68	146.67%
53100 Travel/Entertainment/Meals	1,246.01	600.00	646.01	207.67%
53300 Youth Orchestra Conductor	12,000.00	12,000.00	0.00	100.00%
53305 Flute Choir & Wind Ens. Director	4,150.00	4,500.00	-350.00	92.22%
53315 Youth Orhestra - Advisory	1,800.00	1,600.00	200.00	112.50%
53350 Youth Orchestra Coaching	350.00	500.00	-150.00	70.00%
Total Expenses	\$ 558,111.80	\$ 527,450.00	\$ 30,661.80	105.81%
Net Operating Income	\$ (51,116.63)	\$ (29,400.00)	\$ (21,716.63)	173.87%
Other Income				
60050 Unrealized Gain/Loss	42,774.34	30,000.00	12,774.34	142.58%
Total Other Income	\$ 42,774.34	\$ 30,000.00	\$ 12,774.34	142.58%
Other Expenses				
58000 Interest Expense	965.54		965.54	
Total Other Expenses	\$ 965.54	\$ 0.00	\$ 965.54	
Net Other Income	\$ 41,808.80	\$ 30,000.00	\$ 11,808.80	139.36%
Net Income	\$ (9,307.83)	\$ 600.00	\$ (9,907.83)	-1551.31%

M Phil Marketing Report – 2023 - 2024

Prepared Sept. 5, 2024

Ken Voyles Logos Communications

Public Relations (PR)

Approximately 21 press releases written and released locally, across state and region between June 2023 – July 2024

These included information on season concerts, Tiny Tunes, summer concerts, awards and fundraisers

Top Media Results –

PrideSource profile Nan Washburn

Michigan Manners News Show – Carol Cain interview

The Rock magazine (Plymouth – 3 times)

The Ville magazine (Northville – 2 times)

Plymouth Today magazine (4 times)

Associated Press newspaper (calendar of events)

Hour magazine – calendar of events (2 times)

MLive online calendar

Miscellaneous

Supported new Tiny Tunes program – social media, videos and marketing copy

Short videos created pre-concert for 7 concerts

Marketing Summit in August 2023

Support of annual program book production

Support of annual brochure production and season ticket mailing

Social Media Engagement

Reach, views, likes up across all channels for Facebook, LinkedIn, Instagram (see FB graphics, for example;

Reach breakdown

Instagram:

Total

12,686

736.8%

From organic

1,725

300.2%

From ads

11,289

376.2K%

Facebook

Total

53,633

54.3%

From organic

23,541

50.5%

From ads

31,421

45%

Reach breakdown

Social media posts

Over 300 posts June 2023 - June 2024

Post-concert posts for all events, including videos

Weekly posts (3-5) for both Facebook and LinkedIn; also Instagram

FB direct followers has grown to over 1,200

Website

Changes made to website includes adding graphics for specific events such as Tiny Tunes, summer concerts, fundraisers. Heavy support for season ticket drive in the summer/fall.

Regular (weekly) updates to website has led to traffic increase of 15 % since May/June 2023

\$250-\$499

Marilyn Alimpich
Linda & Jesse Alvarado
Dan & Lorraine Beechuk
Rob Bovitz
Chuck & Linda Cheek
Amy Donoghue
Gerald Cavanaugh & Faye Driscoll
Robert Esler
Kim Fisher
Karen Fox
Sandra Gaura
Katherine Gotshall English
Dianne Hartman
William Hulsker
Kathy Humphrey & Judy Hudson
Debra Kuptz
Marilyne Micheau & Roger Roley
Patrick O'Neill
Lori & Jill Pimlott-Calvin
Ed & Georgia Randinitis
R. Lane & Christina Ritter
James C. Ryan
Robert & Wanda Seymour
Nan Washburn
William & June Weaver

\$100-\$249

Anonymous
Entire Horn Section is Awesome!
Nora Baker
Michael Bode
Nancy Boyd
Laura Brodzik
Beverly Butler
Margaret Cantrell
Deborah Chase
Judy Edwards
Mary Fritz
Jim & Lois Gibbons
Wes & Patty Graff
Rodney & Elaine Harris
Bernadette Higgenbotham
Diane & Bruce Hill
Elaine Honecker
Debbie Johnson
Douglas Jones
Mary Lee Kibbey
Joseph Kokoszka
Brenda Krachenberg
Char Kramer
Ann & John LaFond
Sybil Offen
Jim & Linda Oldfield
Jerry & Mary O'Shaughnessey
Barton Polot
Phyllis Pulty-Bendrey
Grace & Kun Qin
Xiaohui Qiu
Richard Raison
Aaron Reeder
James Ritter, Jr. & Judith Russell
Ruth Payne Rizzo
Jim & Pat Robertson
Shelly Rouse-Freitag
Martha Satwicz
Martha Sheil & Marcia Fowler
Laura Singer
Lary & Barb Smith

Jean Stachura
Tansley Stearns
Paul Trame
Nancy Trudell
David & Jeanne Trumpy
Ed & Nancy Vermillion
Olga Visnevskaja
Sue & Ken Voyles
Cary Washburn

UP TO \$99

Martha Ahern
Barbara Anderson
John Arlen
Dorian Michelson Axiak
Margi & Bob Bake
Karelis Balzan
Jane Barrett
Louis & Donna Barretta
Gail Bazy
Howard Behr
Melissa Bierkamp
Lawrence Bolam
Fran Brandi
Kerri Brannan
Russ & Kathy Brown
Barbara Bushkuhl
Arlene & David Callahan
Margaret Cantrell
Pamela Ceo
Richard Cervi
Robert Chistenson
Joan Cianciarulo
Mary Clark
John Coe
Debbie Corson
Thomas Craig
Susan Crites
Leo Cronenwett
Matthew Curtis
Dan Cusmano
Peter Dale
Joseph Daniel
Mary Deady
Marianne Denomme
Barbara DeRose
Mark Doerr
Carol Dombkowski
Christine Doyle
Kathleen Emrich
James Fernandes
Richard Fillmore
Heather Flores
Sherry Foust
Nancy Fredenburg
Barbara Gallaway
Mary Garrett
Jennifer Goewey
Margaret Goward
Lawrence Hannon
Diane Hanosh
Cathy Hasse
Corinne Hoyle
Amy Hudson-Humphrey
Janet Hunt
Linda Hurley
Marvin & Hustead Family Trust
Henry & Karen Jallo
Kristine Kaluder
Patrick & Jennifer Kehoe

Keith Kellman
Colleen Kelly
King Ron
Sharon Knoph
Elaine Kramer
Vickie Krause
Andrea Krul
Ronald Krupitzer
Chuck Lang
Steve & Carol Lawrence
Bianca Lemon
Samantha Leright
Patricia Lloyd
Scott Lorenz
Amy Luebke
Barbara Maise
Patricia Malcom
Lois Manardo
Douglas & Kelli Mans
David Marino
David Marold
Andrea Mars
Sandy & Steve Marulis
Teresa McCollom
Judith McGibbon
Anne Merenda
Wendy Miller
William Moylan
Evelyn Nash
Nancy O'Connor
Barbara O'Leary
Elizabeth Oliver
Joanne O'Rourke
Joyce Pappas
Pavithra Parthasarathi
Janice Peploski
Joanna Perry
Pauline Petney
Ruth Ann Petres
Vikki Plagens
Kathleen M. Plesuchenko
Diana Portal
Janette Price
Venkat Raman
Kimberly Reno
Vinnie Roberts
Eileen Rodak
Joseph Rooney
John Rudzinski
Kathleen Ryba
David & Mary Ruth Satterthwaite
Sandra R. Schlechter
Nick Schultz
Terry Seaver
Susan Seelye
Susan Sepesi
Daniel Shooshanian
Elaine Silk
Traci Sincock
Caroline Skiver
Richard Smalley
Jane Smiley
Jeff Smith
Jane Snider
Don & Nancy Soderholm
Terry Speaver
Danielle Spehar
Janice Stankiewicz
David Szary

Kirby Terakedis
Michael Valerio
Susan Verble
Catie Weber
Mark Wesley
Robin West
Nancy Wiegand
Michael Wilberding
Jan Wilhelm
Susan Witek
Morgan Wolverton
Patrick Wu

BUSINESS SUPPORTERS

Bank of Ann Arbor
2023-24 Season Sponsor



Amerisure
Artist Collective
Beck & Boys
Bright Funds
C & N Foundation
C. L. Finlan Insurance
Community Financial Credit Union
In Honor of Donald Bain
DTE Community Foundation
First Merchants Bank
Fidelity Charitable
Fox Run Senior Living
Frontstream
Kiwanis Club of Plymouth
Ladera Foundation
John C. Stewart, Attorney
Lotus Arts - Walt Menard
Michigan First Credit Union
OneHope
Piedgeling Foundation
Plymouth Chamber of Commerce
Plymouth Rotary Foundation
Schoolcraft College
Schrader-Howell Funeral Home
The GE Foundation
The Wilcox Foundation

GRANTS

Canton Community Foundation
Michigan Council for Arts & Cultural Affairs /
National Endowment for the Arts
State of Michigan





TINY TUNES

Music for Little Ears 2023-2024 Season

Let music be the experience.

More than ever children in that magical age of pre-school to eight years can benefit from connecting with music, especially classical music. Now they can – and in a fun and easy way- thanks to the Michigan Philharmonic.

Back for a second year, Tiny Tunes begins this fall and takes youngsters on a magical, musical journey where they will discover the beauty of music in its purest form – the sounds of the symphony.

The whole family will enjoy attending together this special four-part series with concerts especially designed for young audiences and performed in the beautiful Jack Wilcox Theater at PARC.

All performances held on Saturday mornings from 10-11 am – making it easy to engage your children in a delightful musical adventure featuring musicians from the Michigan Philharmonic and Conductor Nan Washburn.



Four “Tiny Tunes” concerts are planned:

Saturday, September 16, 2023 • 10:00 am

“Meet & Greet the Instruments of the Orchestra”

A great introduction to the strings, winds, brass and percussion instrument families of the orchestra. Kids learn how the instruments work while hearing music from Mozart to Star Wars.

Saturday, November 18, 2023 • 10:00 am

“Musical Storytelling” A journey through musical storytelling featuring “Peter & the Wolf” and other great musical stories with student narrators from the Ovation Children’s Theater Company.

Saturday, February 24, 2024 • 10:00 am

“Movin’ to the Beat” Exploring musical rhythms and dance with special guests from Artistry Dance.

Saturday, May 11, 2024 • 10:00 am

“Live with the Michigan Phil Youth Orchestra

A perfect musical introduction to our own young musicians of the MPYO.

Tickets:

Tickets are \$30 for a family performance pack that includes two adults and up to three children. A family series price for all four concerts is \$100. Single tickets can be purchased for \$10.

Location:

Jack Wilcox Theater at PARC • 650 Church St., Plymouth, MI 48170



Nan Washburn, Music Director & Conductor



Performance dates, times and locations are subject to change as well as all of the State of Michigan’s health and safety guidelines.

For tickets and information call 734.451.2112, or visit www.michiganphil.org - also follow us on

